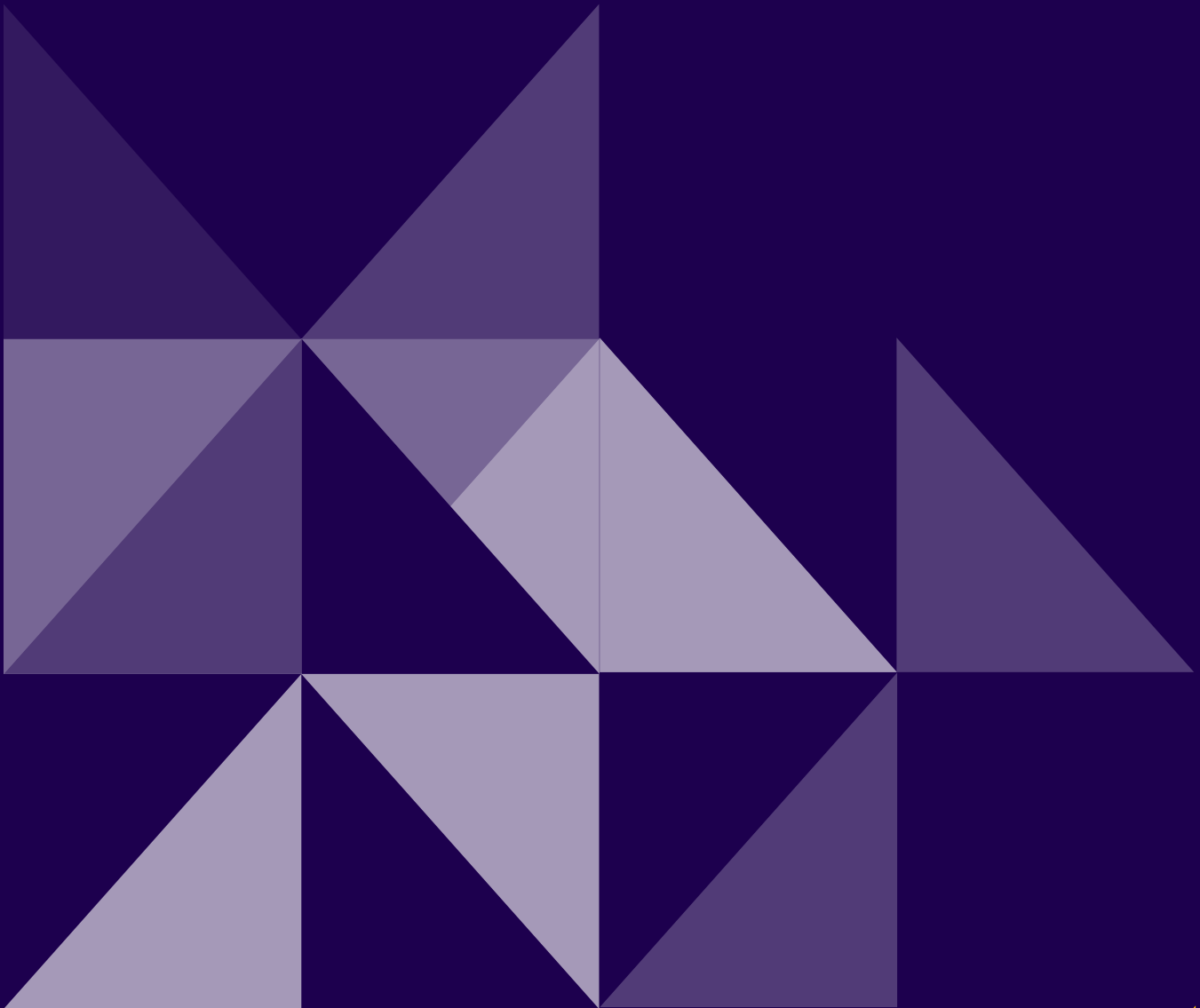


OPTiFARM



Harnessing live farm
unit data to identify
and manage the
behaviours that drive
productivity

Livestock Value Engineering



Understanding Behaviour Improving Business

Livestock Value Engineering represents the new gold standard in digital farm animal management.

It drives the world's first interactive animal experience database, continually improving our understanding of how and why animals react to different local stimuli and how we can best respond.

This knowledge and understanding can now be applied in real time to individual farm operating units, business enterprises and industry sectors to improve animal welfare, commercial productivity, resource optimisation, staff utilisation, and supply chain de-risking.

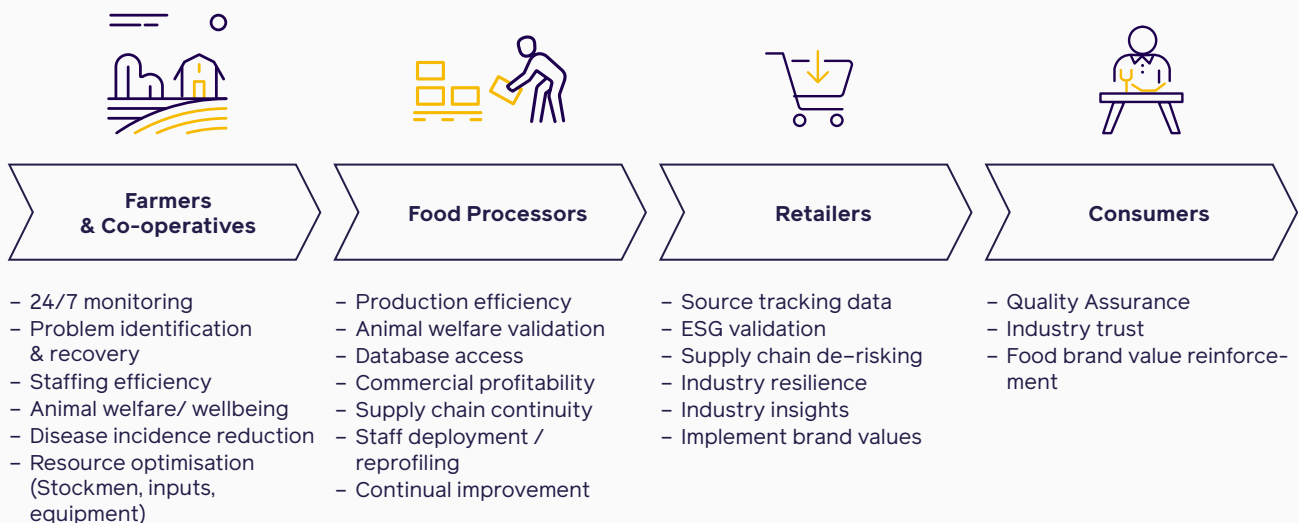
A blend of science, data analysis and practical farming experience, Optifarm's Livestock Value Engineering adds real value and resilience at every stage in the global food chain.

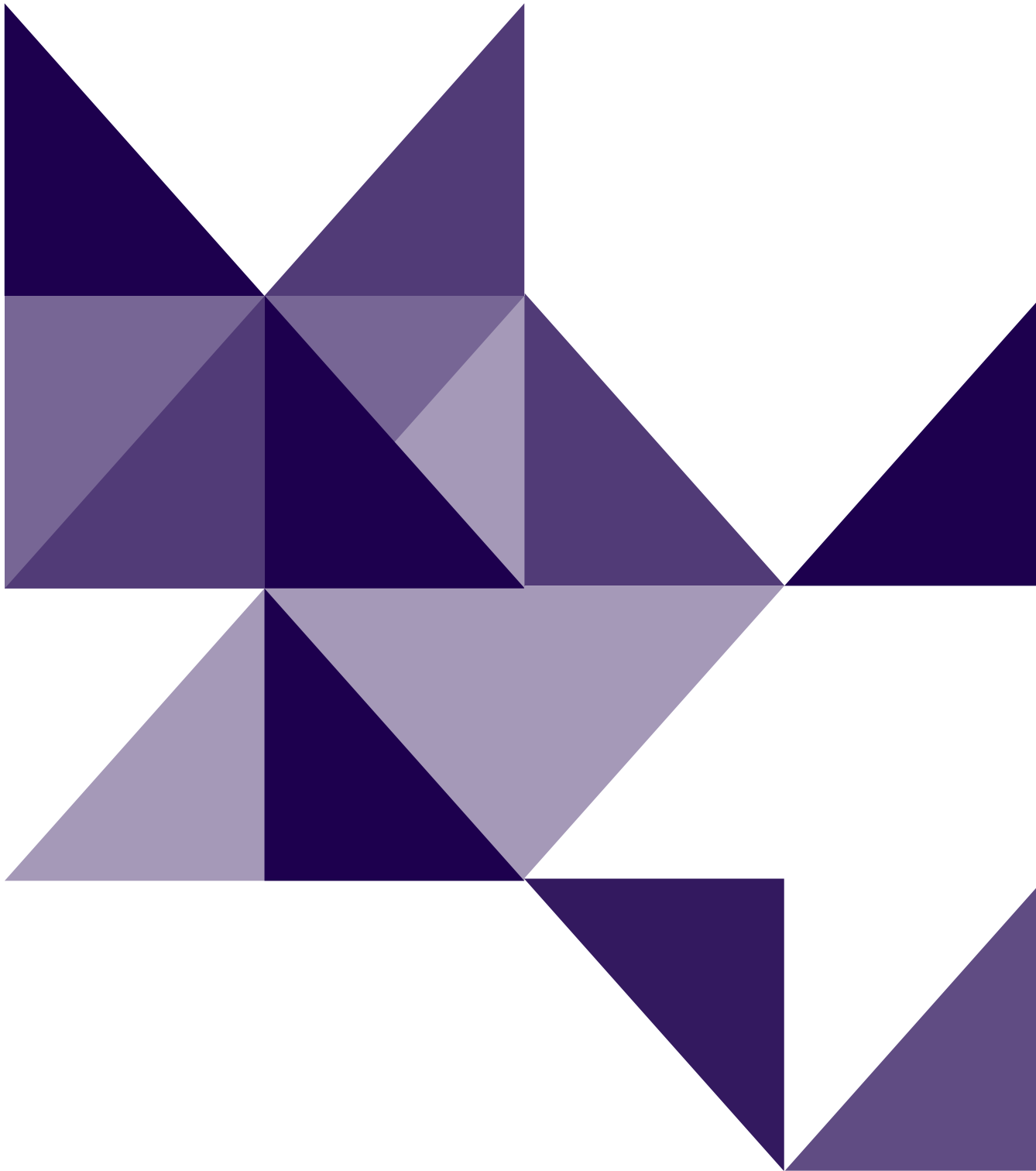
Value creation from shed to shelf

For Stockmen and Farm Owners we ensure that the livestock benefit from real time 24/7 shed management insights, consistent routines and support, equipment protection, and optimisation of human and machine resources.

For Processors and Integrators we bring enhanced commercial productivity and production efficiency as well as supply chain validation

For Retailers we help ensure supply chain resilience and ESG transparency from source tracking data.





Our Services

1

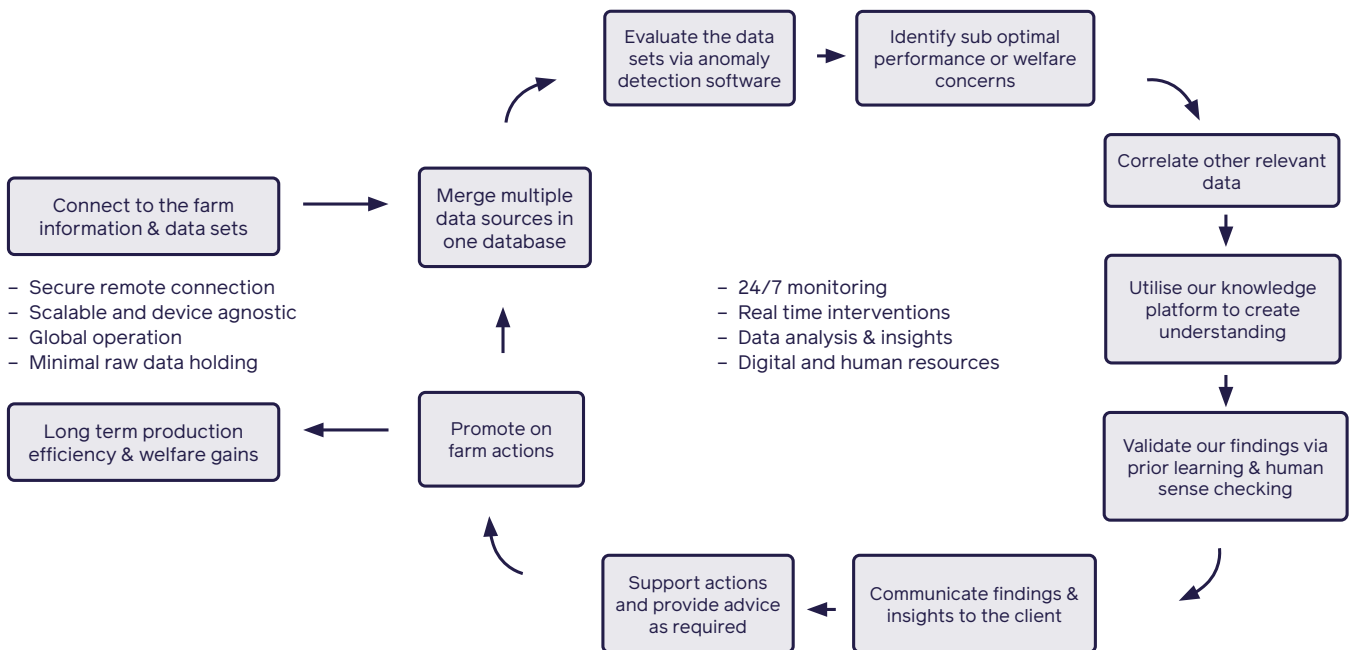
Livestock Productivity And Welfare

We provide a remote support and optimisation service, using advanced software and data analytics overseen by both smart artificial intelligence and monitoring experts 24 hours a day.

For the best results, being able to connect real time farm unit data with an understanding of animal behaviour is the key to productivity gains. This is the only way to determine why things are occurring, and so provide guidance on farm actions which lead to improved circumstances and outcomes.

A system that delivers measurable welfare and enhanced productivity

We can utilise, evaluate and deliver actionable insights from any real time data source, and existing control panels. We ensure effective communication to the relevant persons to assist on farm actions. Additionally we use the data to validate the changes that were made as they happen. This ensures the livestock have the best possible welfare which is the foundation of supply chain.



Optifarm is an excellent fit for SoundTalks as a developing precision livestock business. The combination between PLF tools and Optifarms excellent knowledge of the growth process will improve the return on every farm

| Dries Berckmans – CEO, SoundTalks

A system that works with all Livestock - Poultry, Swine Dairy and Aqua

Our capability started in Poultry but today has applications across all farmed environments and is now being used globally in other farmed species for efficiency and resilience, and is the source of customer reassurance.

This real time proactive support helps build the animals' own resilience, reduces stress and minimises sickness, thus reduces reliance on antibiotics and other interventions.

Assisting biosecurity protocols

Remote data analysis and interpretation offers significant opportunities to re evaluate the biosecurity measures deployed within larger farming enterprises. By remotely understanding what is happening in every barn every few minutes 24 hours a day it is much easier to deploy physical farm visits to those farms only at the point of need.

it is often possible for us to detect early warning signs of issues based on our real time data assessments and this can therefore better and quicker

inform clients and allow them to take remedial actions sooner.

Delivering actionable insights

Our approach and our ability to be completely agnostic, and evaluating multiple data streams independently means we are unique in our ability to deliver insights to our clients in real time, so that they are able to respond faster and more accurately. We believe that this is the only way to derive actions from data and ensure those actions enhance welfare and productivity



3

Digital consultancy

The world of animal farming is experiencing unprecedented challenges, from climate change and cost inflation to welfare standards, working culture and changing consumer attitudes.

Food suppliers need to deliver greater productivity, less supply chain risk, enhanced traceability and more efficient use of all resources throughout their supply chain.

Consumers are rightly demanding a more transparent, rigorous, efficient, and effective way of ensuring that the welfare of the animal products they consume has been optimal and validated to a high standard. We provide consultancy services

across many of these areas to help support companies and their investors meet their ESG requirements that may include:

- Production efficiency
- Validation of animal welfare
- Supply chain transparency
- Implementation of company procedures
- Energy efficiency gains
- Reduced farm emissions
- Establishing relevant ESG indicators (social, economic & environmental)

Contact Us

We would be happy to work with you to help you understand how Livestock Value Engineering can help your business respond to the challenges it faces. Please reach out to us.

T: +44 (0) 1246 569066
E: info@optifarm.co.uk
Web: www.optifarm.co.uk

Where to find us:

Raincliffe House, West Block
Barker Ln
Brampton, Chesterfield
S40 1DU
UK